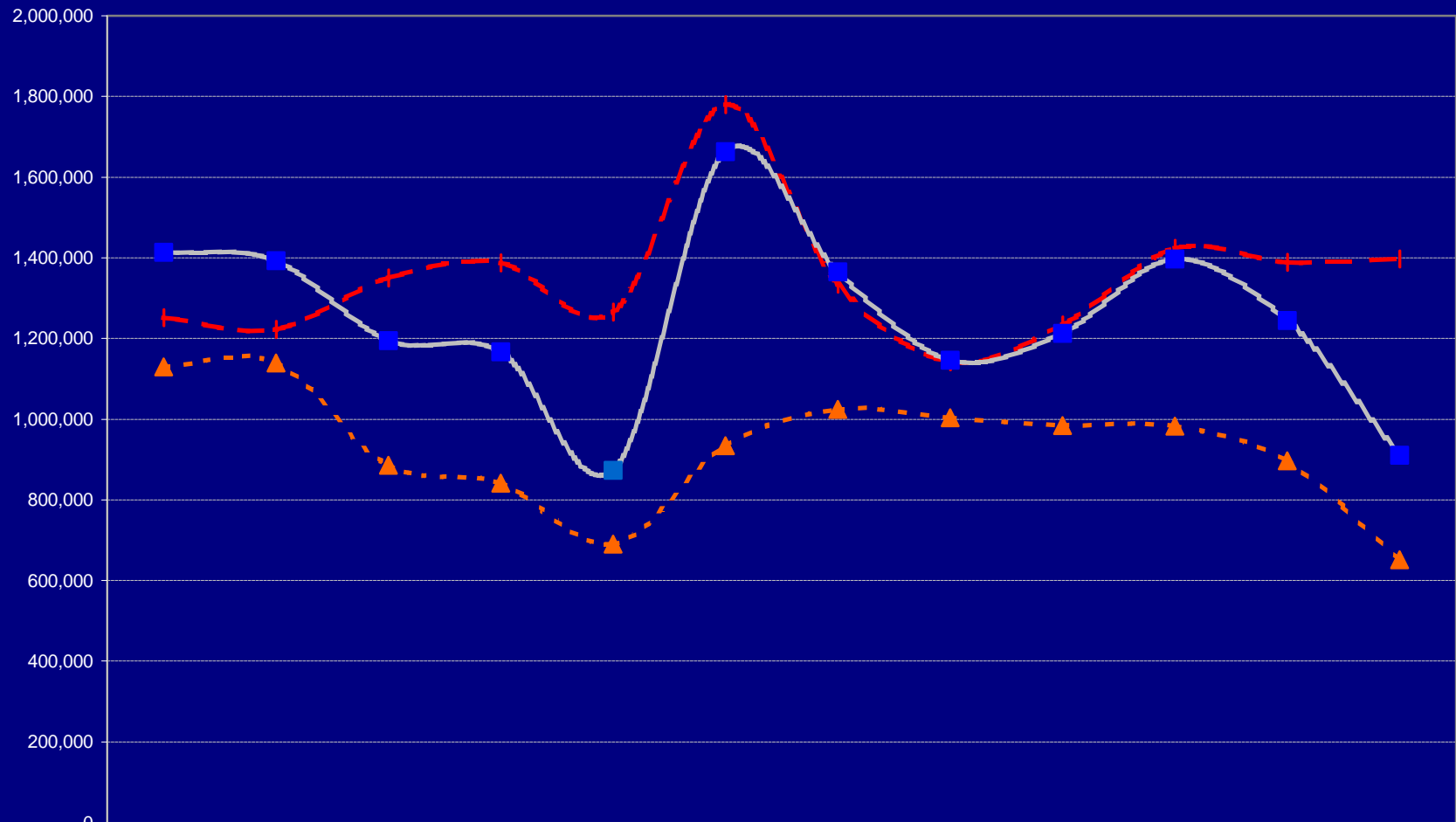


Apartamentos



	1,992	1,993	1,994	1,995	1,996	1,997	1,998	1,999	2,000	2,001	2,002	2003 (proy)
m2 aptos	1,250,947	1,223,088	1,349,923	1,387,882	1,265,958	1,779,326	1,334,029	1,141,421	1,233,081	1,423,275	1,388,956	1,397,381
MM Bs IPC	1,413,542	1,393,056	1,195,260	1,167,297	873,358	1,662,657	1,365,624	1,146,070	1,213,308	1,397,742	1,244,652	910,713
Bs IPC/m2	1,129,977	1,138,966	885,428	841,064	689,879	934,431	1,023,684	1,004,073	983,965	982,060	896,106	651,729